

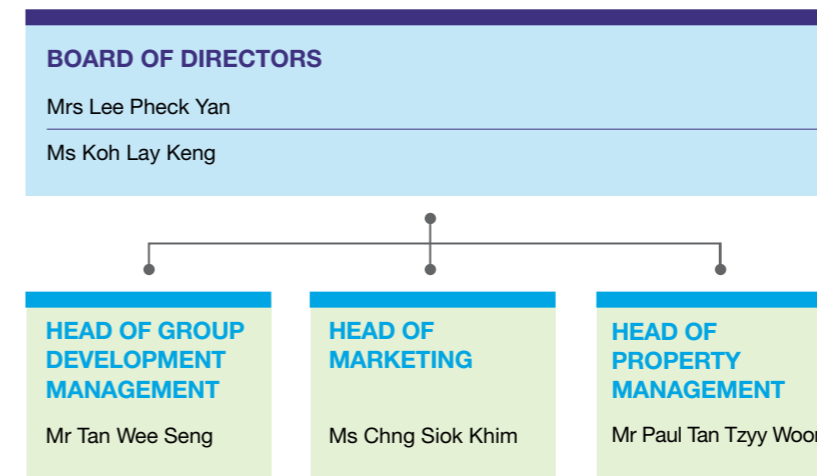
ORGANISATION STRUCTURE

MAPLETREE INDUSTRIAL TRUST MANAGEMENT LTD.

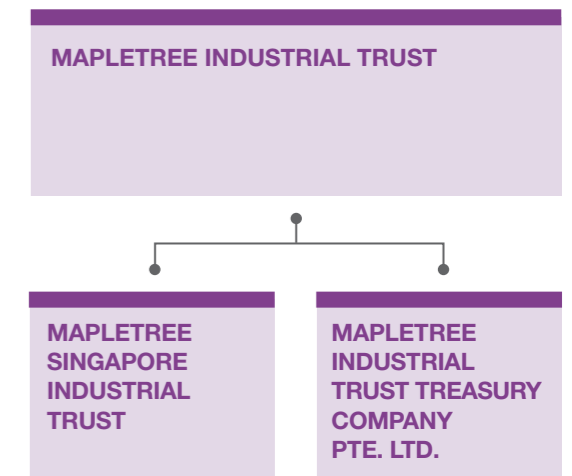


ORGANISATION, CORPORATE AND TRUST STRUCTURE

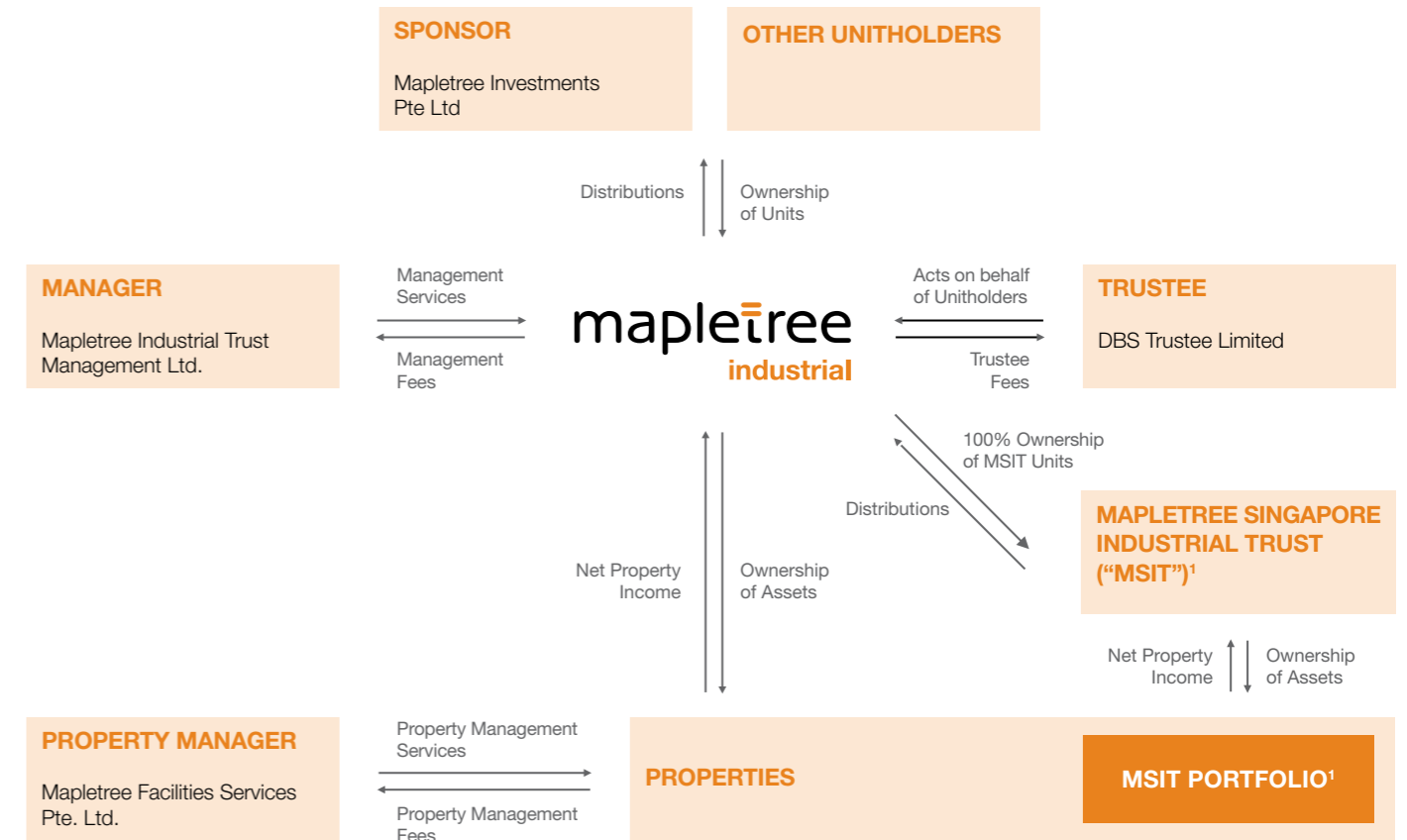
MAPLETREE FACILITIES SERVICES PTE. LTD.



CORPORATE STRUCTURE



TRUST STRUCTURE



¹ MSIT was constituted as a private trust on 27 March 2006. The MSIT portfolio comprises two Hi-Tech Buildings and four Light Industrial Buildings in Singapore. MIT acquired MSIT on Listing Date, 21 October 2010.