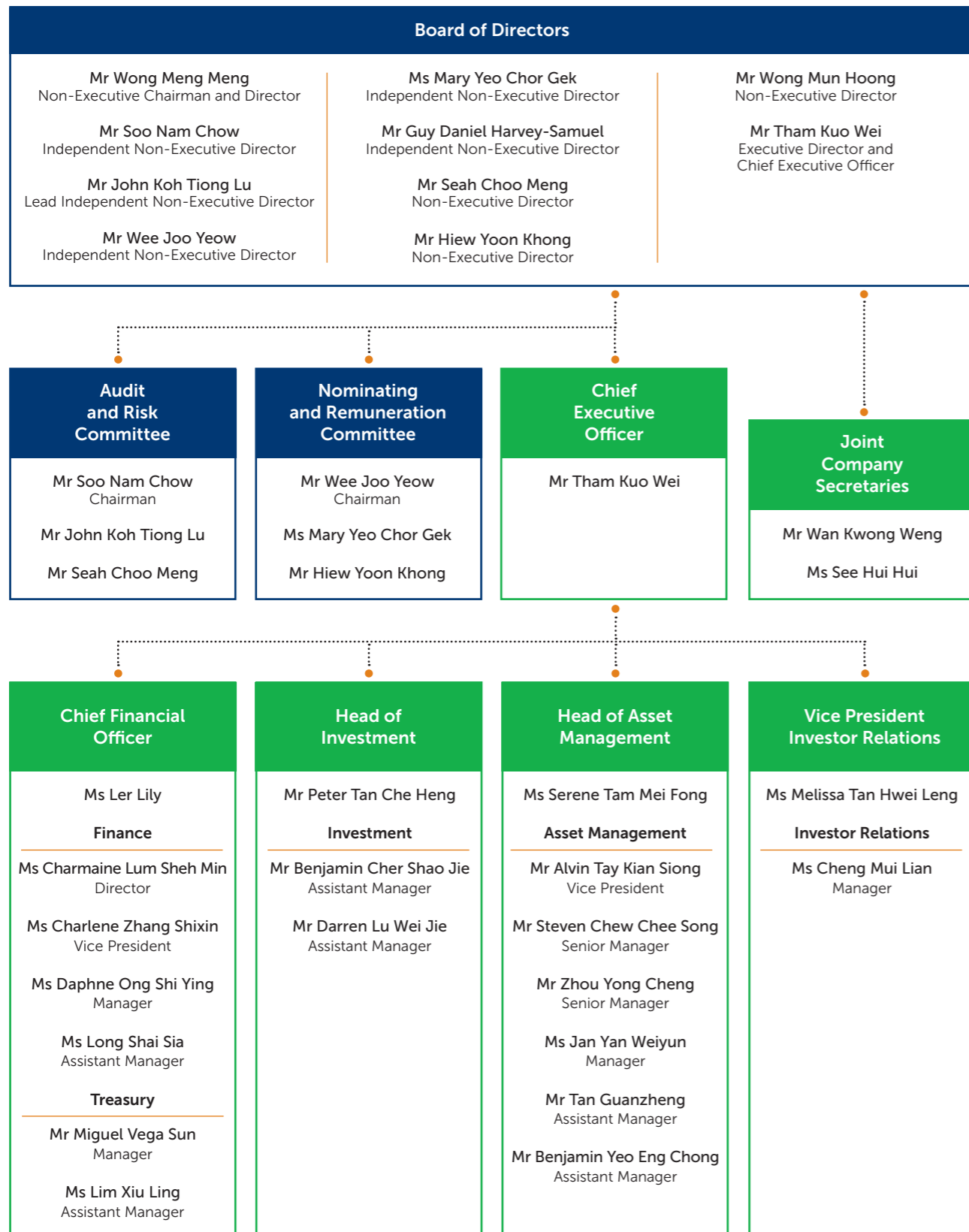


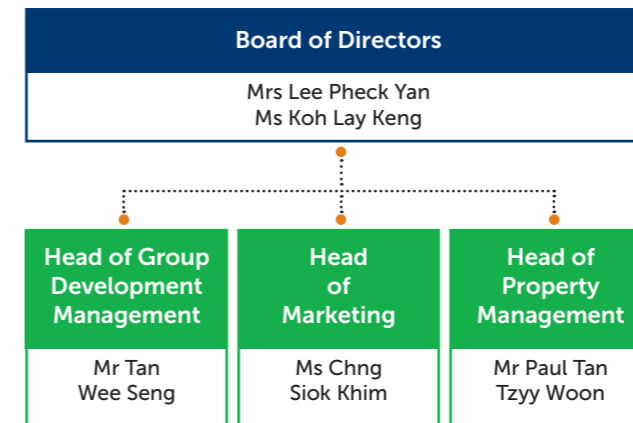
Organisation Structure

MAPLETREE INDUSTRIAL TRUST MANAGEMENT LTD.

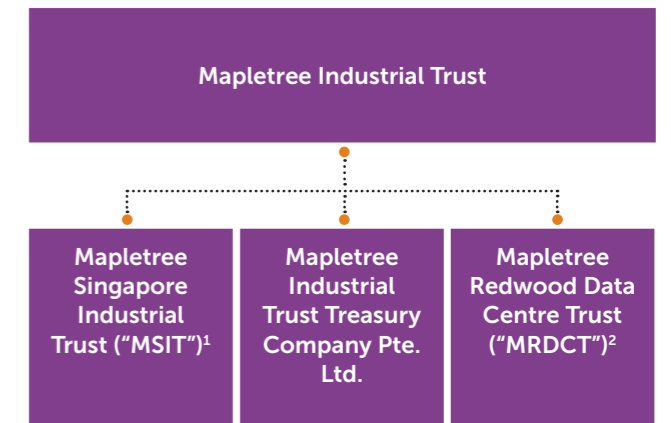


Organisation, Corporate and Trust Structures

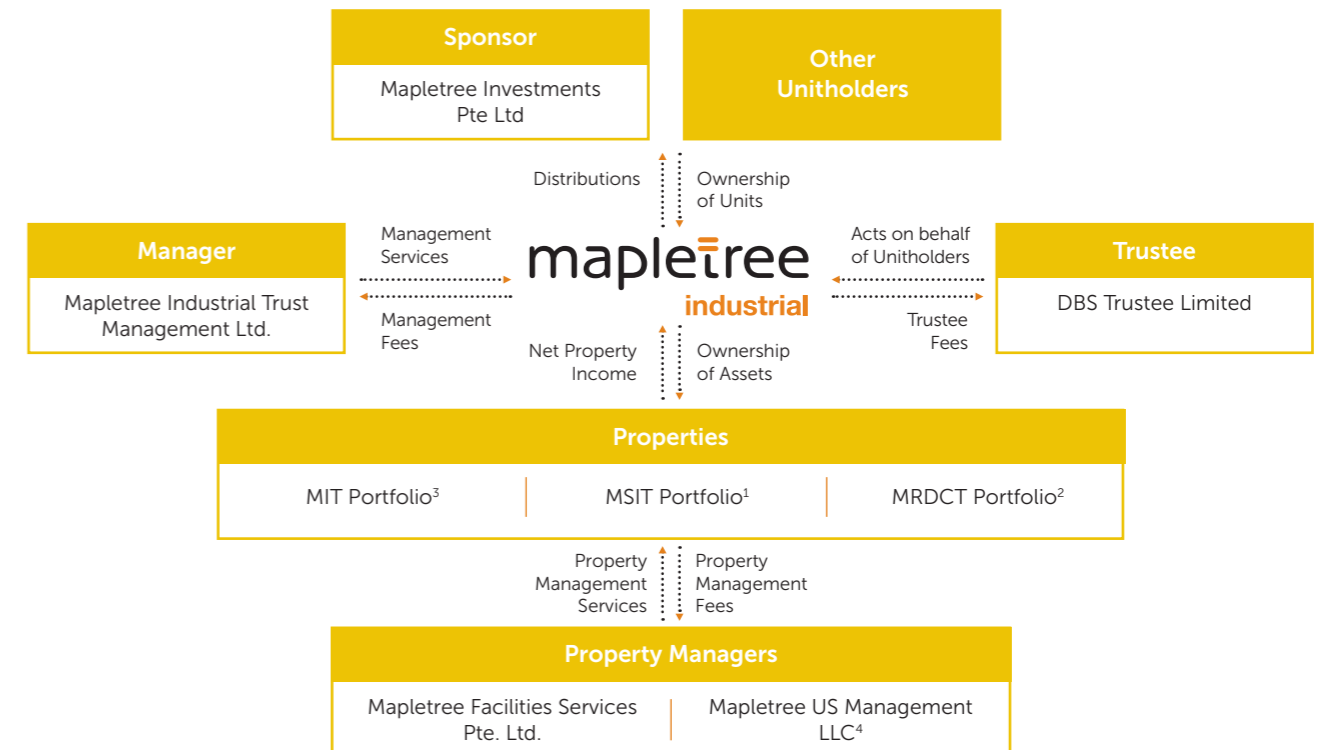
MAPLETREE FACILITIES SERVICES PTE. LTD.



CORPORATE STRUCTURE



TRUST STRUCTURE



¹ MSIT was constituted as a private trust on 27 March 2006. The MSIT portfolio comprises two Hi-Tech Buildings and three Light Industrial Buildings in Singapore. MIT acquired MSIT on Listing Date, 21 October 2010.

² Relates to MIT's 40% interest of the joint venture with Mapletree Investments Pte Ltd in a portfolio of 14 data centres in the United States through MRDCT.

³ Refers to properties held directly under MIT.

⁴ A wholly-owned US subsidiary of Mapletree Investments Pte Ltd, which provides property management, lease management, project management and marketing services in relation to the 14 data centres in the United States.